

For users

Change of radiation controlled area
classification at MLF experimental halls

MLF, Oct. 20, 2016

Change of Radiation Controlled Area Classification at MLF Exp. Halls

- ▶ From Nov. 1st, 2016, the radiation controlled area classification at the MLF exp. halls will be changed (**2nd class → 1st class**).
- ▶ At the BL1 1 exp. room and the 3rd exp. preparation room, normal 1st class radiation controlled area (class B) is applied.
- ▶ At the exp. halls and the exp. preparation rooms except the above areas, low surface contamination area (class C) is applied.
- ▶ In the maintenance period (long shutdown period at summer), the classification at the exp. hall will be temporally changed to 2nd class.

Classification	Abbreviation	Place	Detail	Wear & shoes
1 st class radiation controlled area	1 st class A	(Maintenance area)	Area to suppose any surface contamination for maintenance	Specified clothes Specified shoes (yellow)
	1 st class B	BL1 1 exp. room 3 rd exp. preparation room	Area to suppose any surface contamination	Specified clothes Specified shoes (yellow)
Primary radiation control area Low surface contamination area	1 st class C	Experiment hall 1 st and 2 nd exp. preparation room	Area not to permit an action with any surface contamination	No specified clothes Specified shoes (white)

Modification point (1)

- ▶ **Enter to and exit from the MLF experimental halls**
 - Via the contamination survey room
 - Change to specified shoes (White)
 - Contamination survey by a hand-foot-cloth-monitor is necessary when exit from the MLF exp. halls.
 - Baggage lockers at the locker room is available to check a luggage.
 - Objects can be carrying in and out via old entrance also.

- ▶
 - Users can also enter and exit via the contamination survey room at the BL08, BL09 and BL22 building. When exiting from these buildings, contamination survey by hand-foot-cloth-monitor is necessary.

▶ ※ When an emergence, evacuate via an emergency exit nearby.

Modification point (2)

- ▶ **Bringing objects from the experimental halls**

- Survey is necessary for objects to bring from the experimental halls.

- Object contamination monitor is available to survey objects.

- A large size object and an irradiated sample must be surveyed by the radiation control staff.

- At the BL08, BL09 and BL22 building, because there is no object contamination monitor, all objects to bring must be surveyed by the radiation control staff.

- ▶ **Management of waste and unnecessary objects**



- Unnecessary objects occurred in the experimental halls is disposed as a radioactive waste.

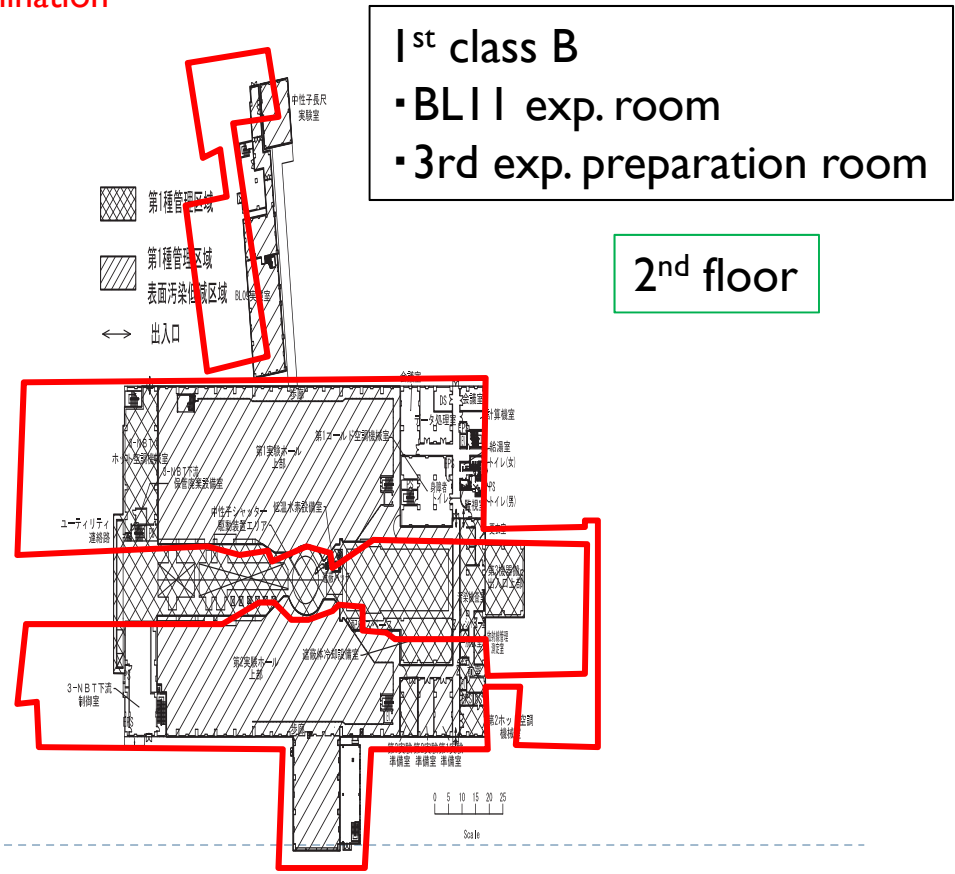
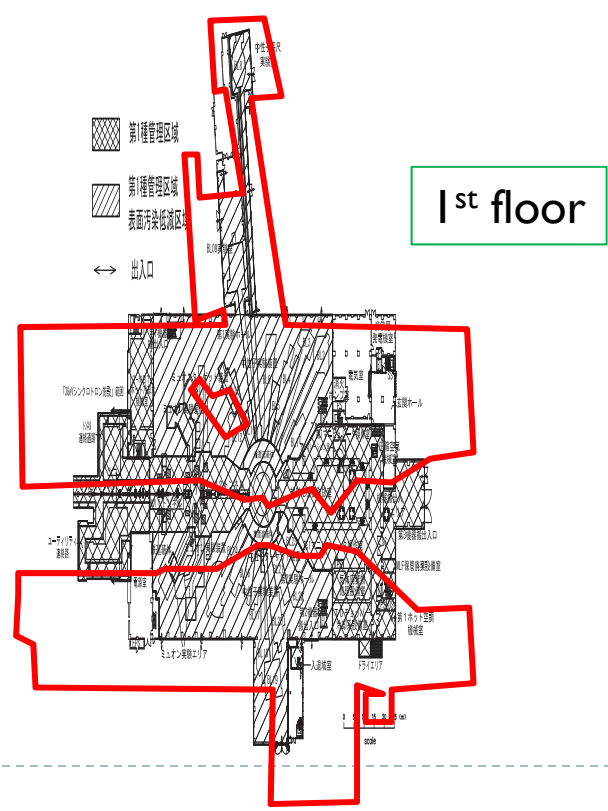
- Don't bring unnecessary objects



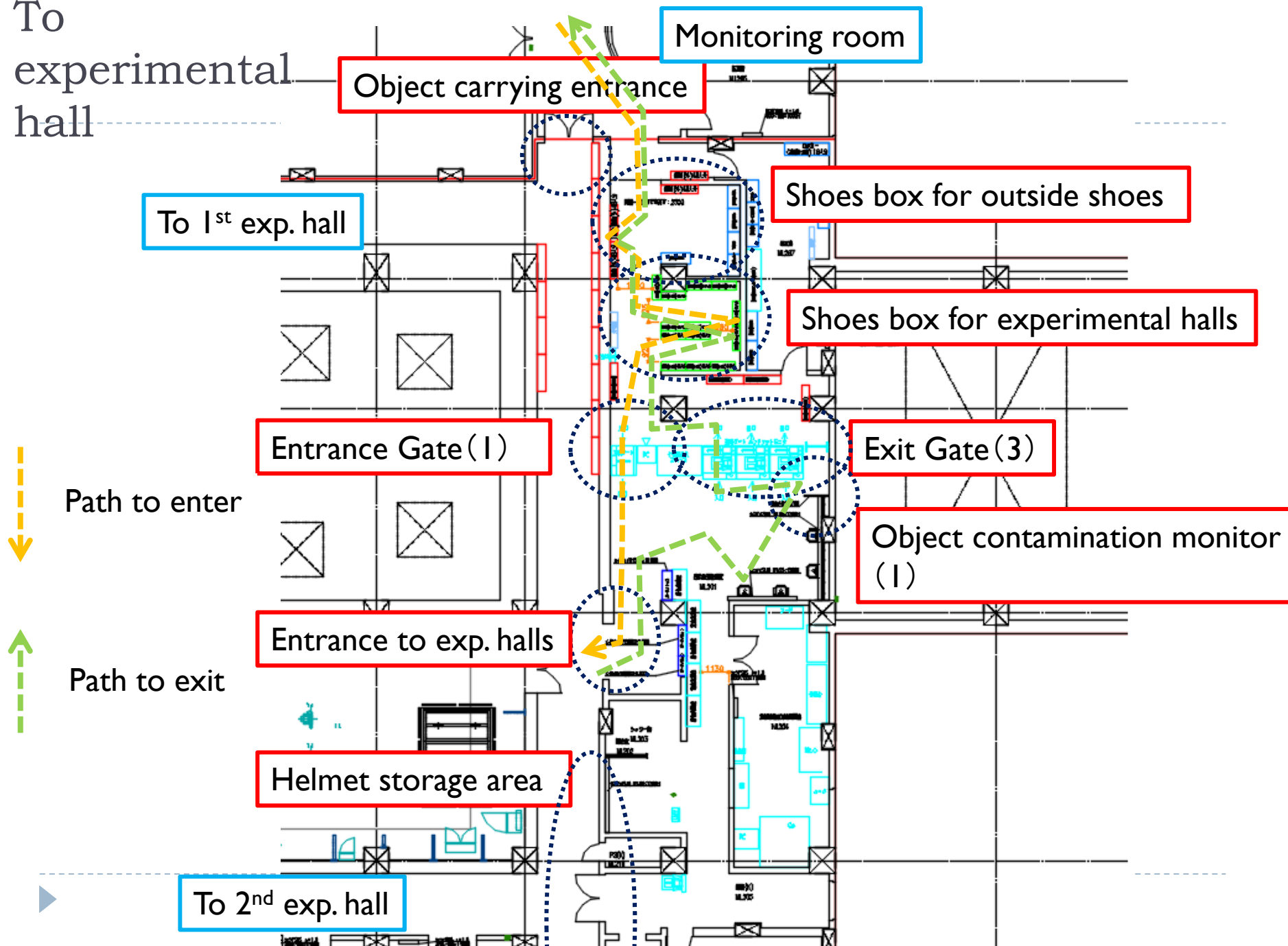
1st class radiation controlled area

Low surface contamination area

-  1st class radiation controlled area → **1st class B** Area to suppose any contamination Specified cloth Specified shoes (Y)
-  1st class radiation controlled area Low surface contamination area → **1st class C** Area not to allow an action with any contamination No specified cloth Specified shoes (W)

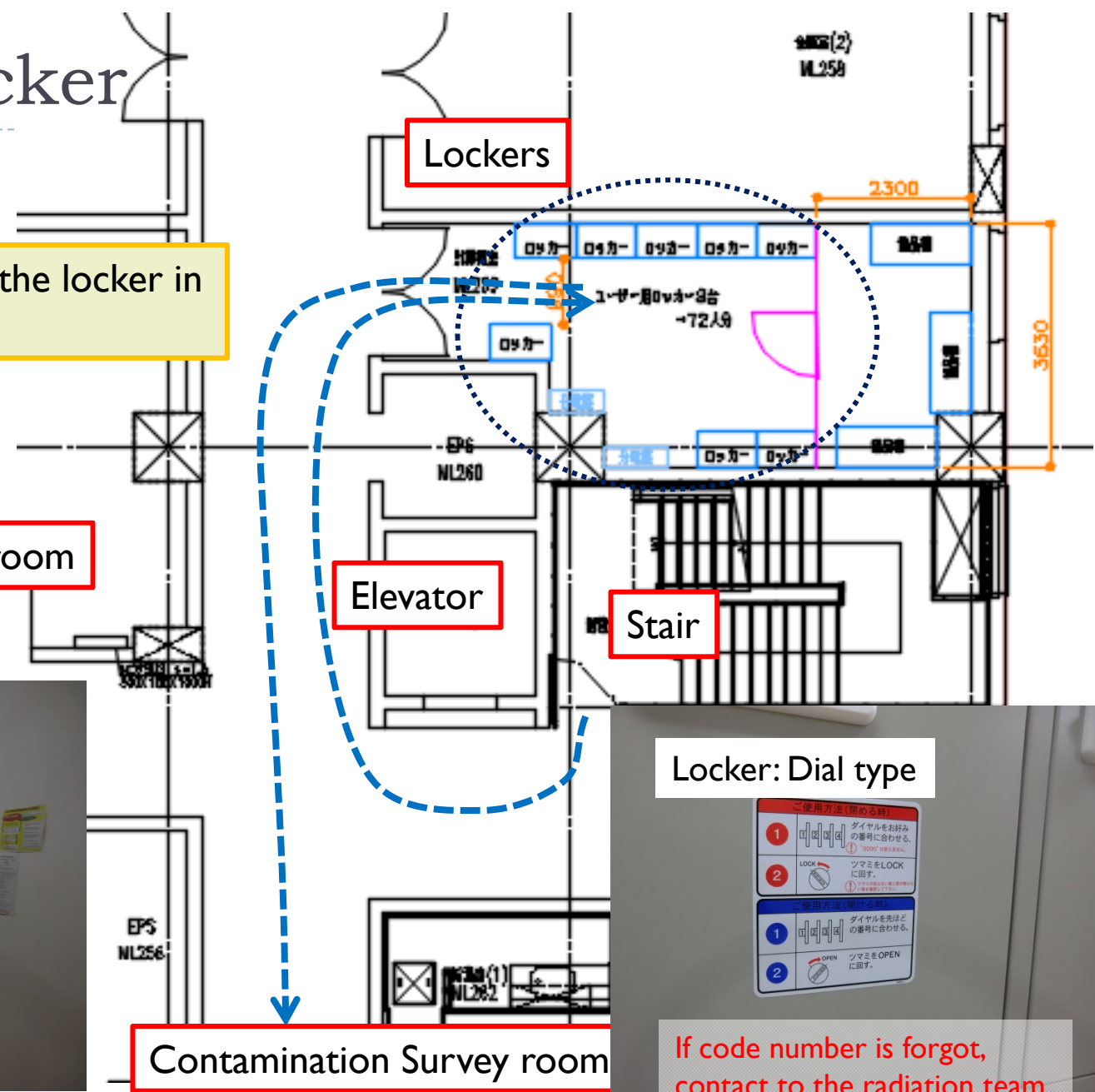


To
experimental
hall



Use of a locker

Baggage can be checked to the locker in locker room.



Locker: Dial type

ご使用方法(閉める時)	
1	ダイヤルをお好みの番号に合わせる。 ① "LOCK" 押す。
2	ソマミをLOCKに回す。 ① 押す。
ご使用方法(開ける時)	
1	ダイヤルを先ほどの番号に合わせる。
2	ソマミをOPENに回す。

If code number is forgot, contact to the radiation team.

Photo. (1) Entrance of contamination survey room



New entrance

Enter via automatic door and
Put outside shoes to shoes box



Old entrance

Objects can be carrying in and out.
This door is usually locked.
The key is managed at Monitoring room.



Photo. (2) Contamination survey room

Shoes box for the experimental halls



Entrance gate



Path to the experimental halls



Exit gate and hand-foot-cloth-monitor



Object contamination monitor can be used.

Photo. (3) For maintenance area



Specified shoes
for maintenance area

Users : Don't use these equipment
(only for maintenance)



Specified helmets
for maintenance area



Specified clothes
for maintenance area

Management of waste

- ▶ Unnecessary objects occurred in the experimental halls is disposed as a radioactive waste.
- ▶ Several cans for the radioactive waste are located in the experimental halls.
- ▶ Different type of the radioactive waste
 - ▶ Combustible: Carton box (Red)
 - ▶ Fire-resistant: Carton box (White)
 - ▶ Nonmetal: Pail can (White)
 - ▶ Metal: Pail can (Blue black)
 - ▶ Nonsteel: Pail can (Green)
- ▶ Please consult the radiation control staff separately about large size and highly radio-active waste.



→Keep reduction of the radio-active waste

▶ ❌If any trouble, contact to the radiation team.